

# GoogleEarth: Socotra - Qualecyah



# GoogleEarth: Socotra – Qualecyah 2002



27. srpen 2002

Image © 2009 DigitalGlobe

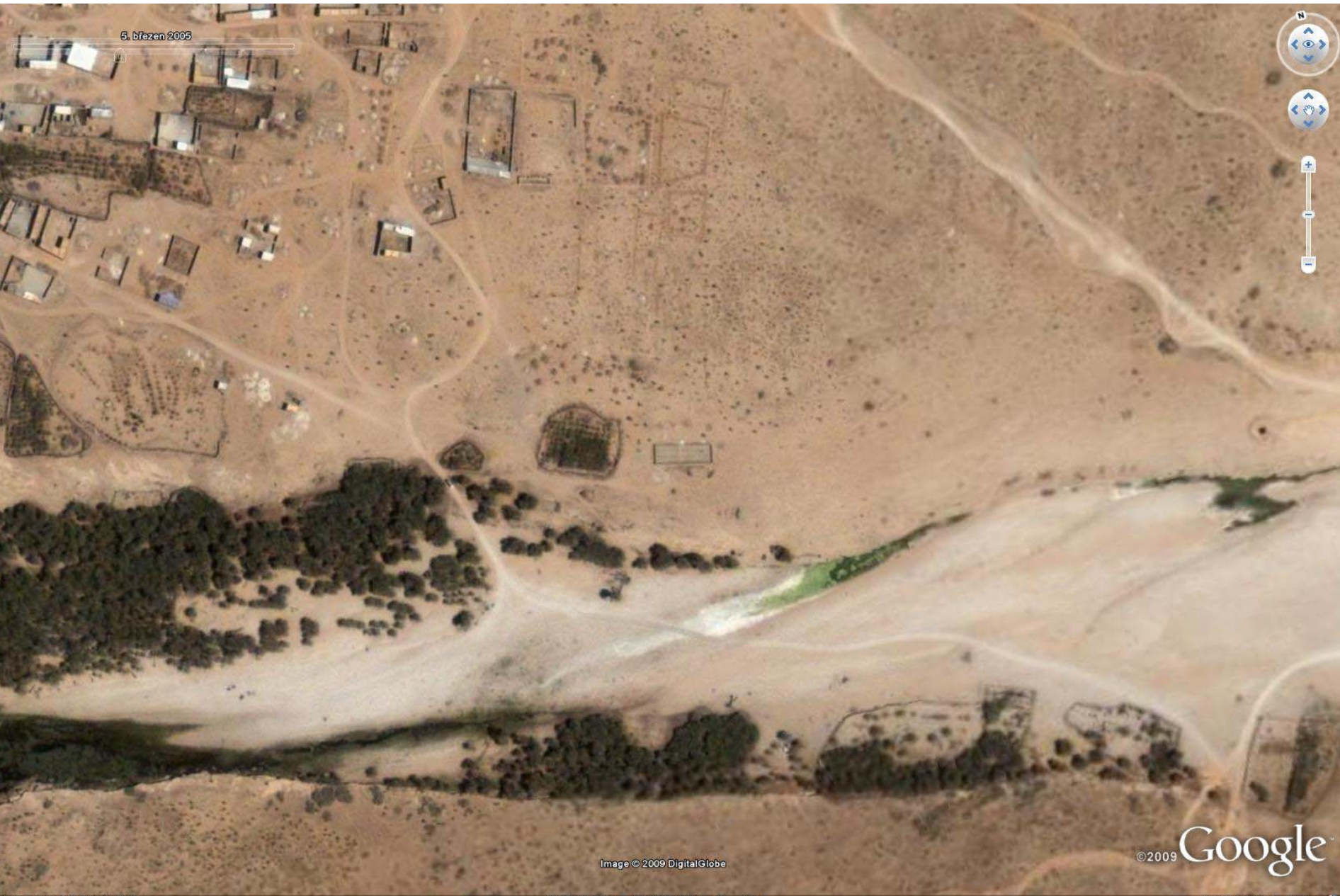
© 2009 Google

Datum snímku: 27. srpen 2002

12°41'06.56" S 53°29'29.42" V výš. 8 m

Vyška pohledu 635 m

# GoogleEarth: Socotra – Qualecyah 2005



# GoogleEarth: Socotra – Qualecyah 2006



17. září 2006

# GoogleEarth: Socotra – cesta na Firmihin 2002



# GoogleEarth: Socotra – cesta na Firmihin 2002



Navigation controls including a timeline slider set to 20. listopad 2002, with markers for 2002 and 2009.

Map navigation controls including a compass, a zoom in/out button, and a street view pegman.

© 2009 Google  
Image © 2009 DigitalGlobe  
© 2009 LeadDog Consulting

©2009 Google

# GoogleEarth: Socotra – cesta na Firmihin 2004



26. červen 2004

N

©2009 Google  
Image ©2009 DigitalGlobe  
©2009 LeadDog Consulting

©2009 Google

# GoogleEarth: Socotra – cesta na Firmihin 2006



17. září 2006

© 2009 Google  
Image © 2009 DigitalGlobe  
© 2009 LeadDog Consulting

©2009 Google

12°32'09.00" S 53°56'44.25" V výš. 986 m

Výška pohledu 1.81 km



# GoogleEarth: Socotra – Mangrove 2005 (březen)



5. březen 2005

Image © 2009 DigitalGlobe

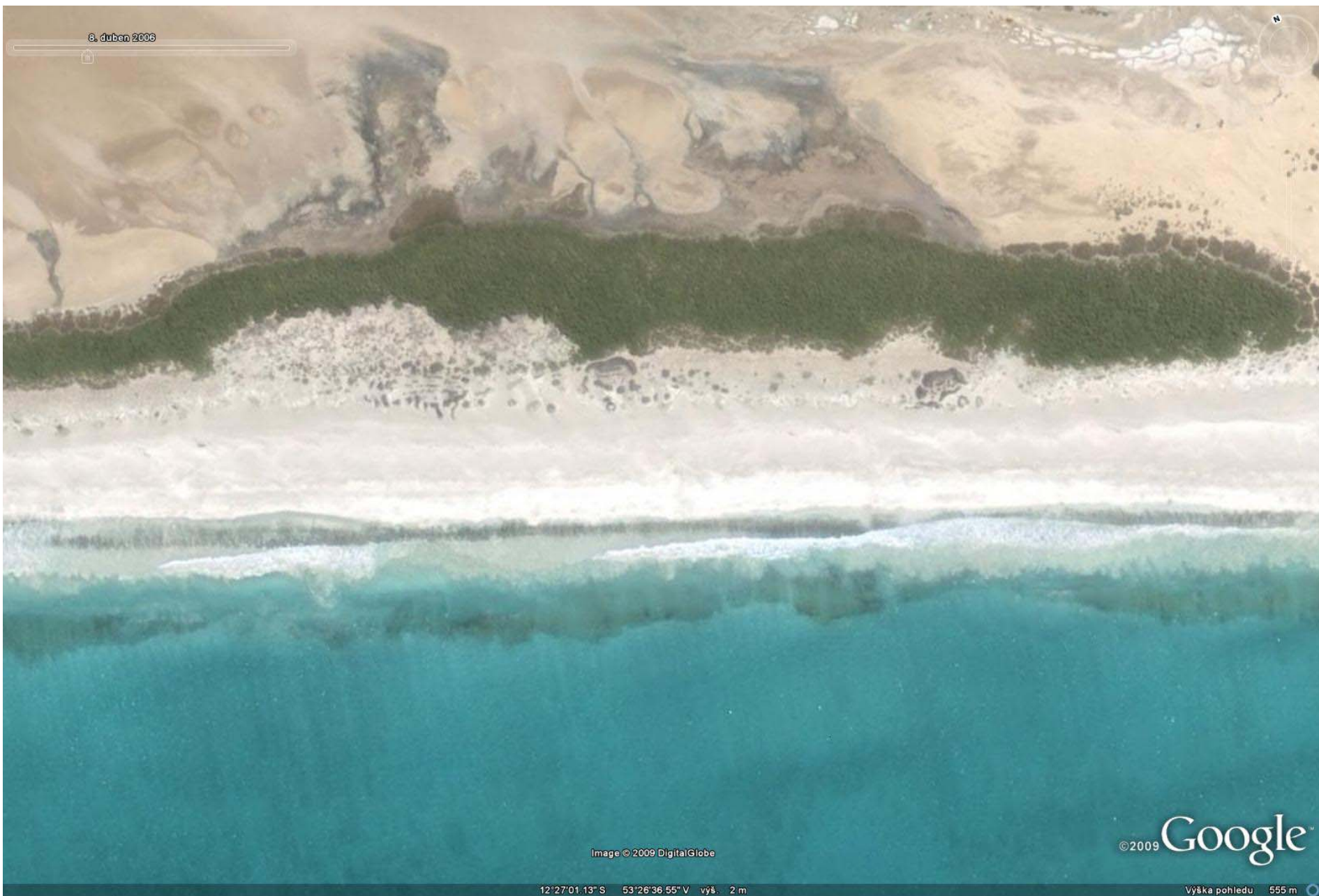
© 2009 Google

Data origin: 5. březen 2005

19°27'04.4286 S 52°06'20.5511 E

Scale: 555 m

# GoogleEarth: Socotra – Mangrove 2006 (duben)



8. duben 2006

Image © 2009 DigitalGlobe

©2009 Google

12°27'01.13" S 53°26'36.55" V výš. 2 m

Vyška pohledu 555 m

# GoogleEarth: Socotra – Mangrove 2005 (květen)

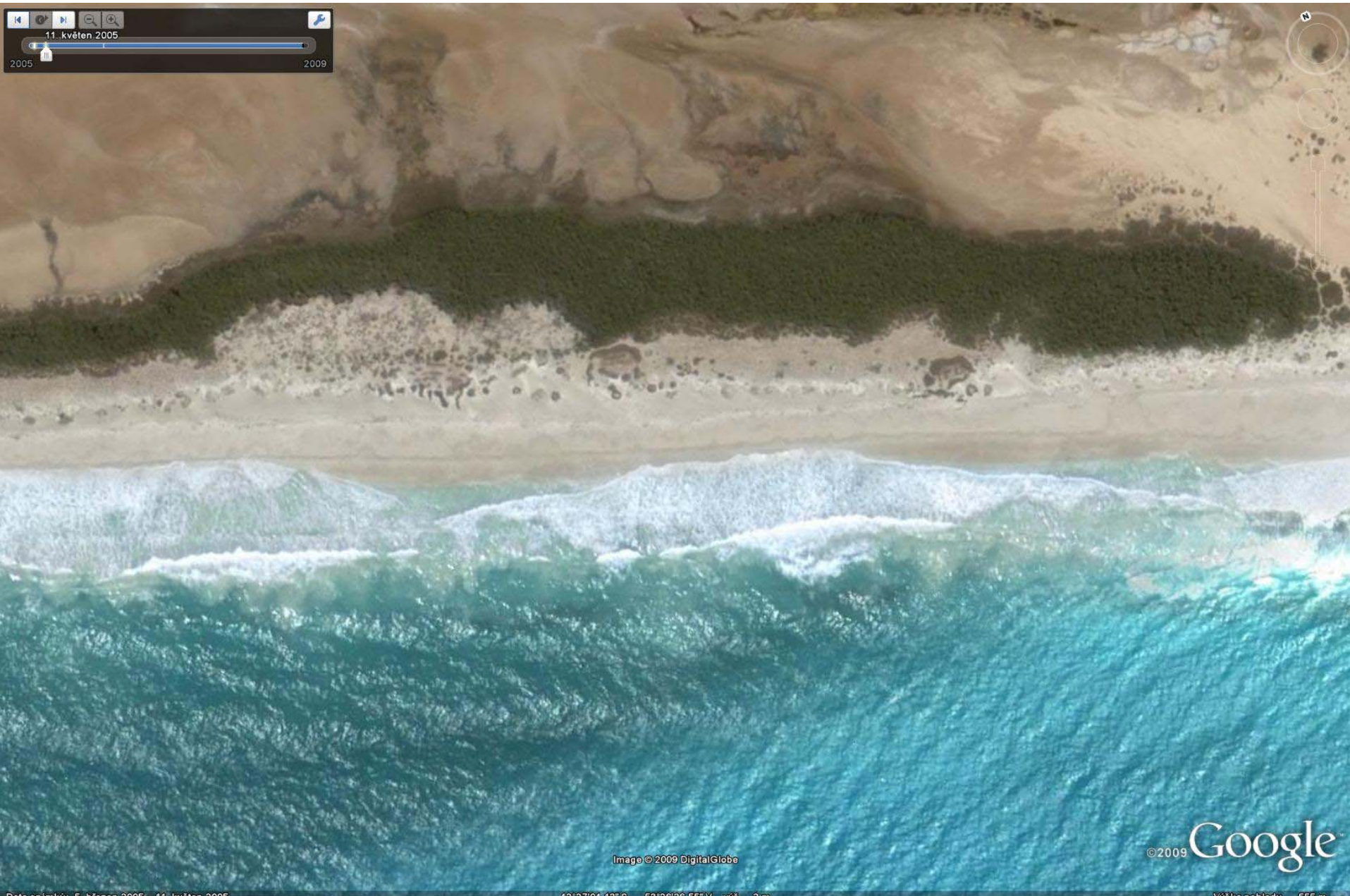
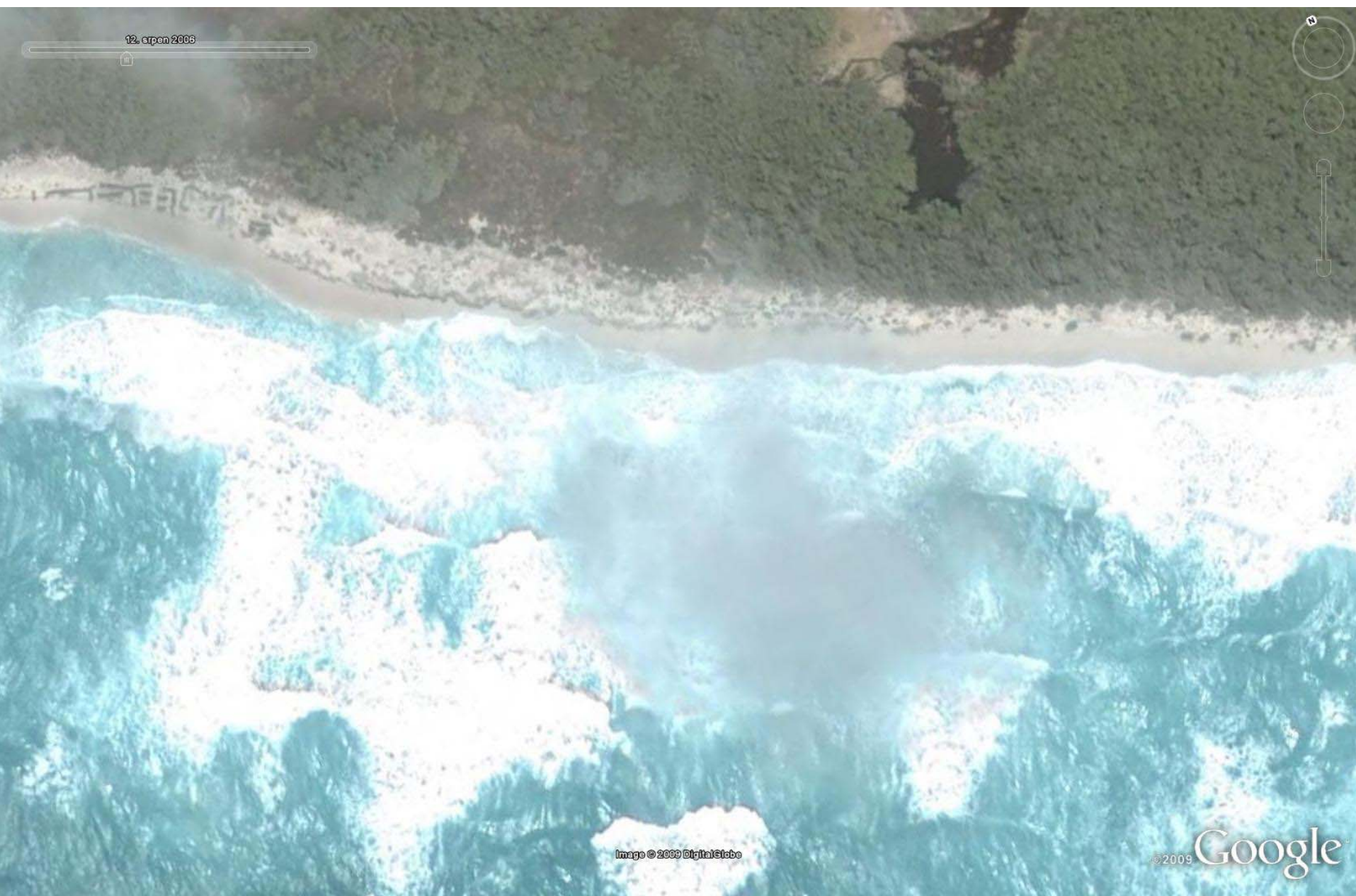


Image © 2009 DigitalGlobe

© 2009 Google

# GoogleEarth: Socotra – Mangrove 2006 (srpen)



12. srpen 2006

Image © 2009 DigitalGlobe

©2009 Google

12°27'42.08" S 53°25'05.40" V výš. 2 m

Výška pohledu 474 m