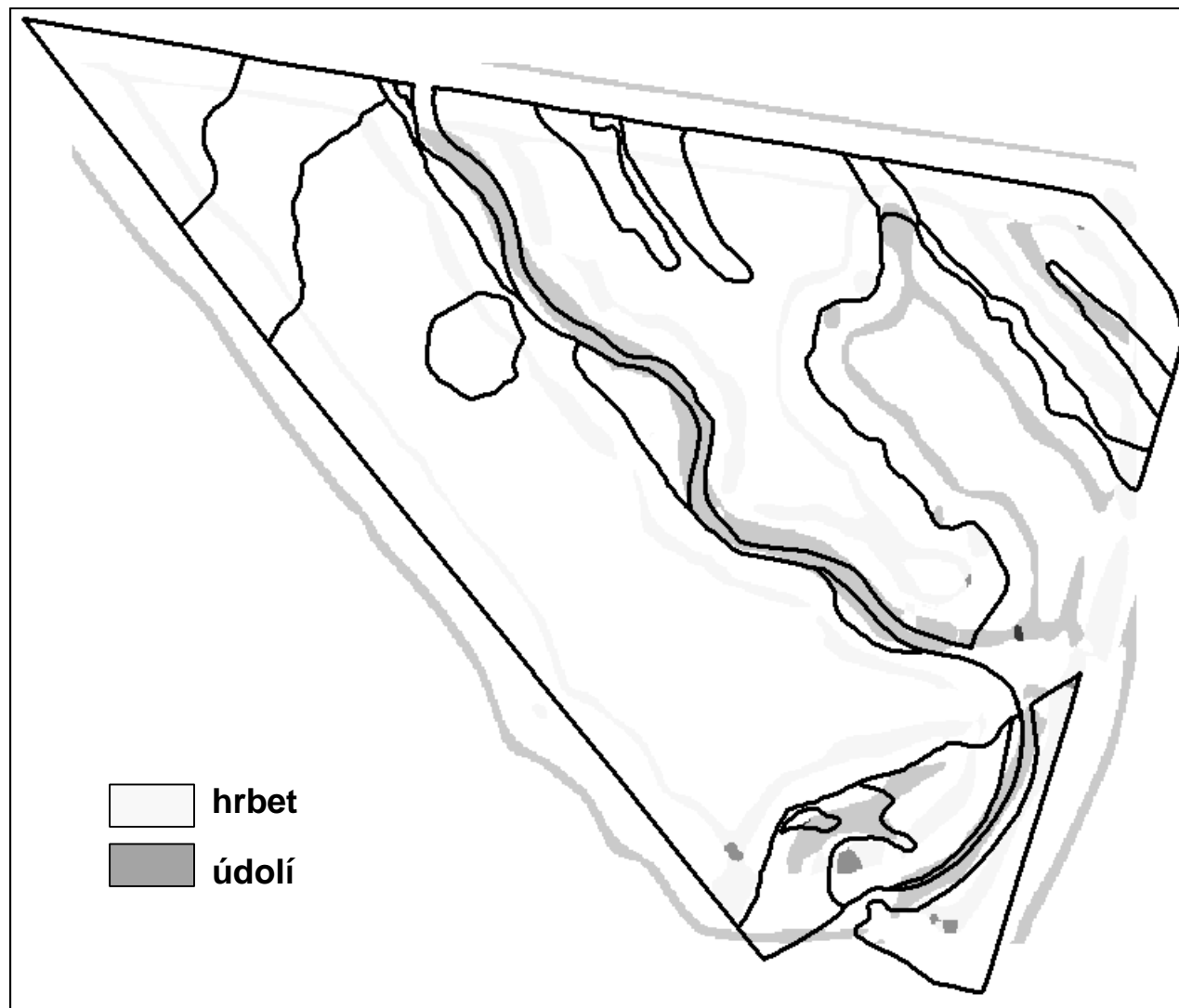
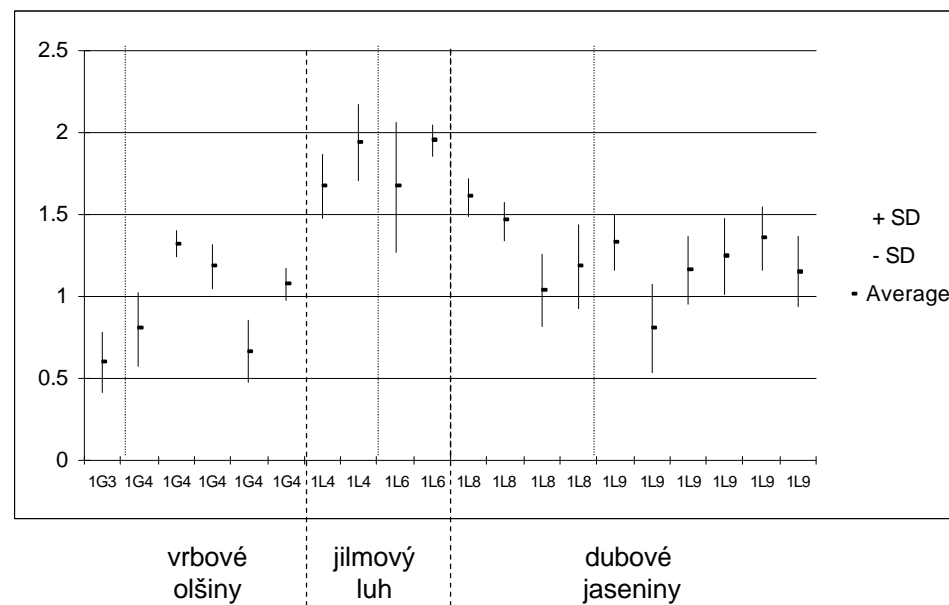
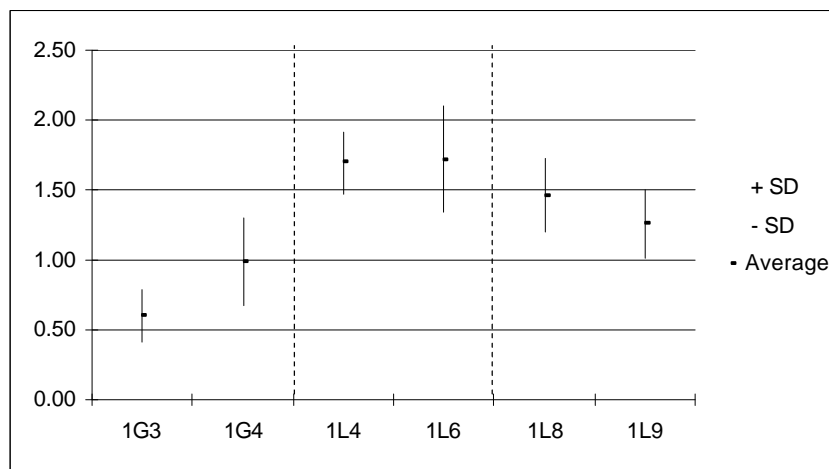
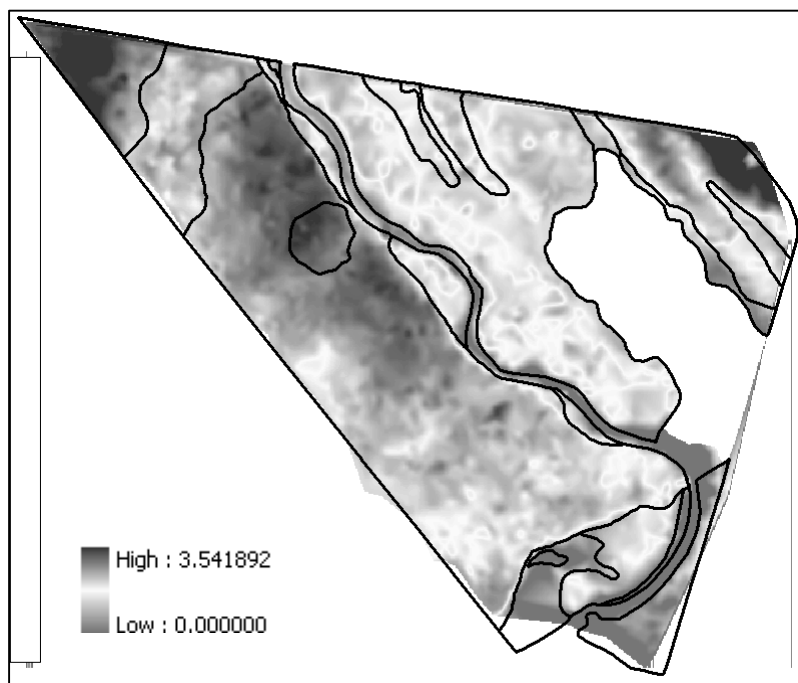


Proložení typologické mapy a vrstev extrahovaných z DEM:

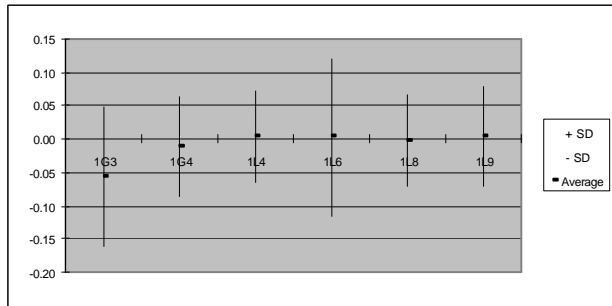


Porovnání lesních typu a relativní nadmořské výšky:

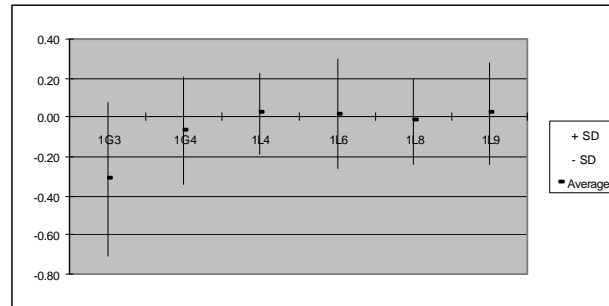


Porovnání lesních typu a tvaru svahu:

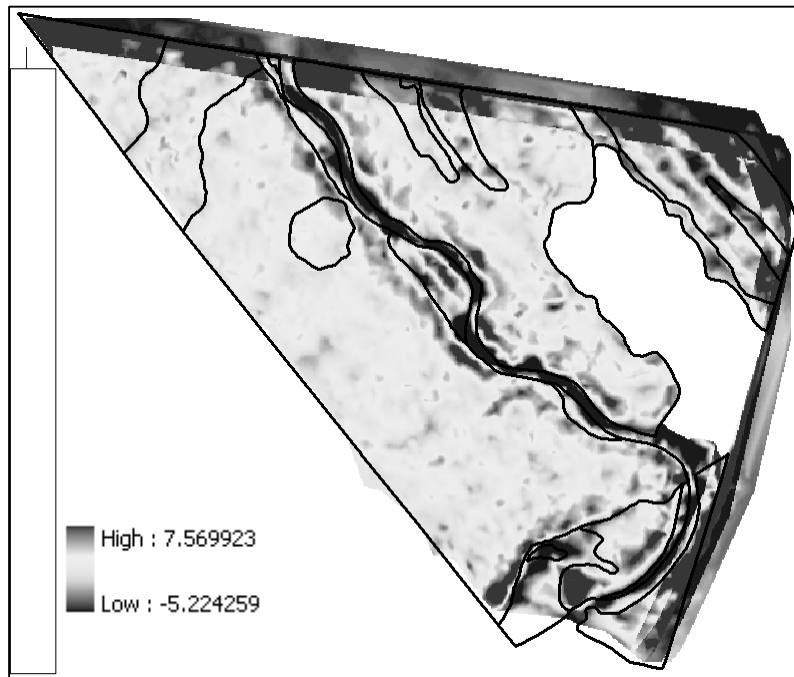
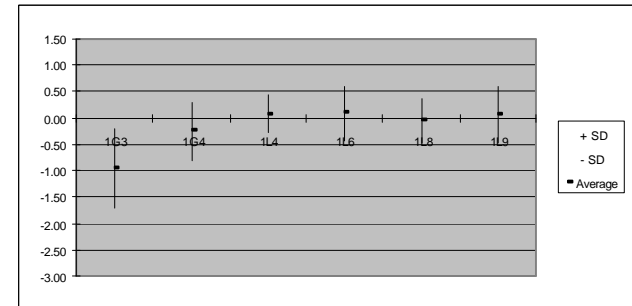
5 x 5



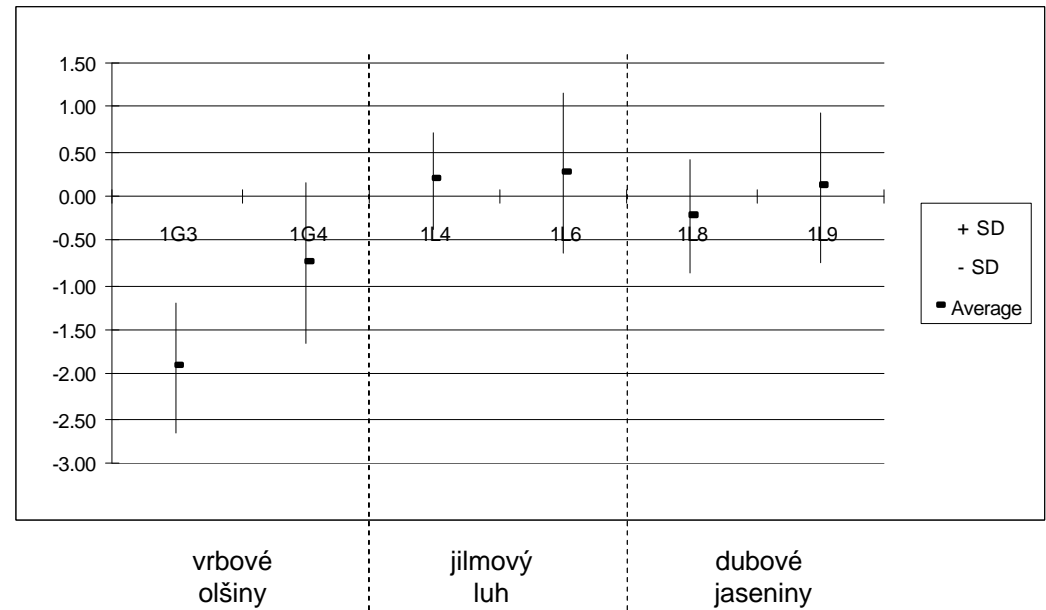
11 x 11



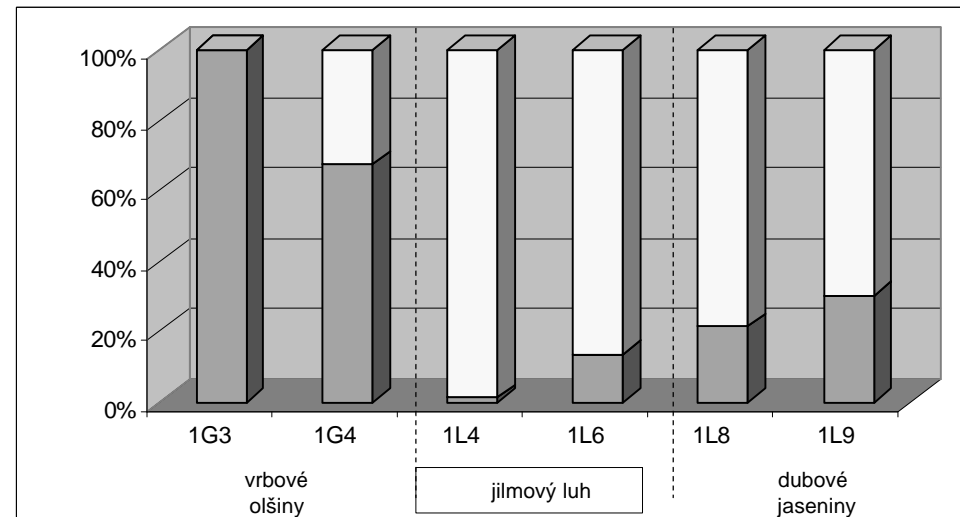
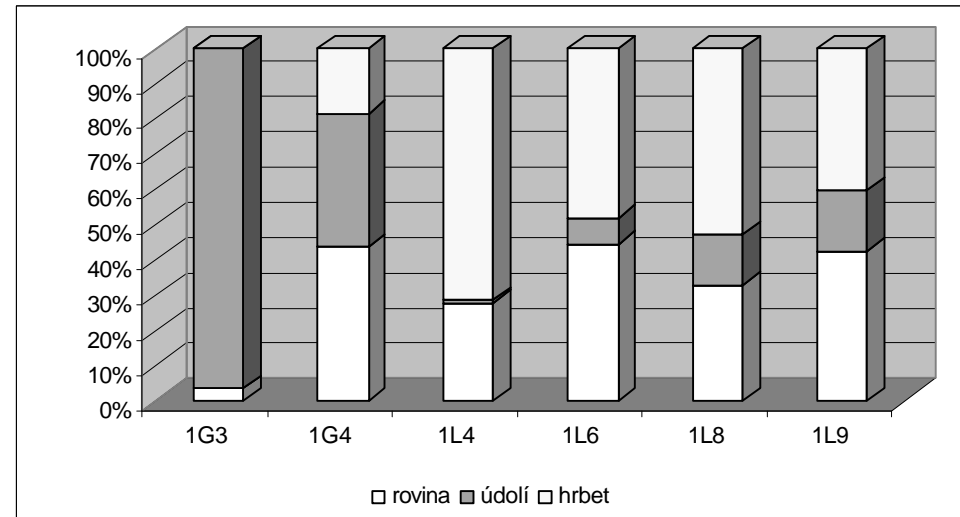
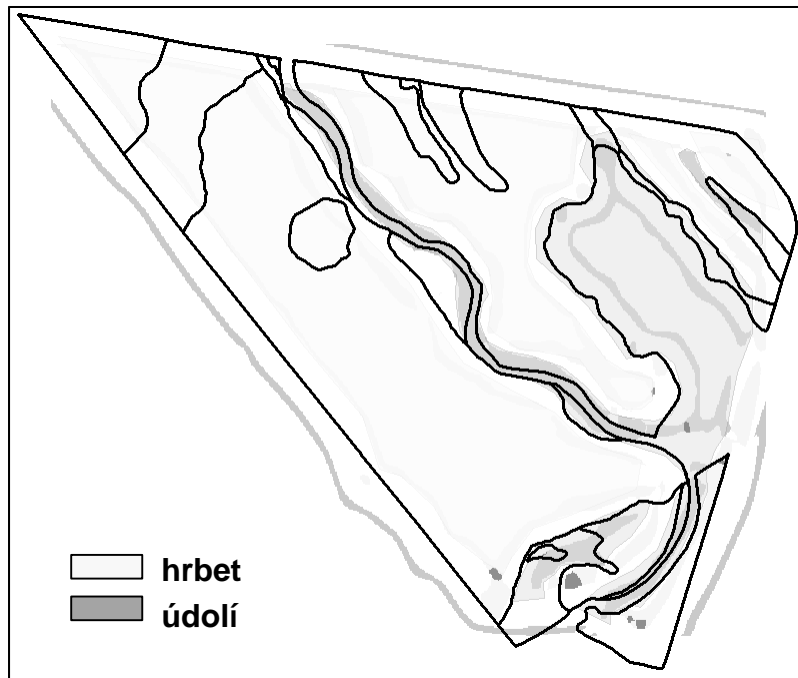
21 x 21



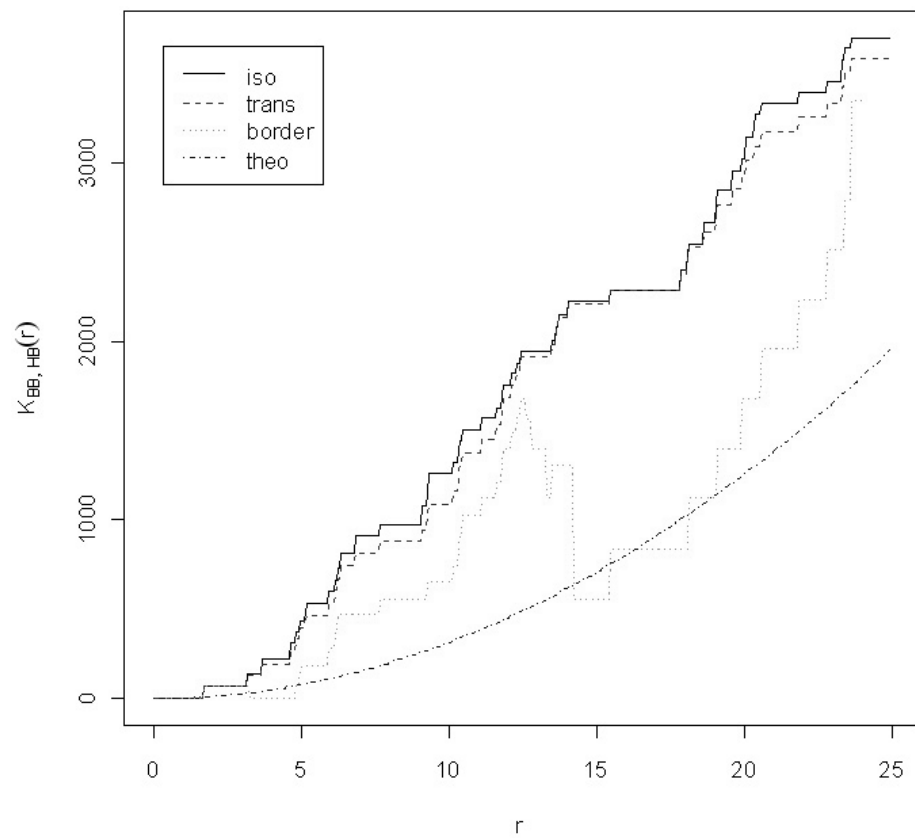
41 x 41



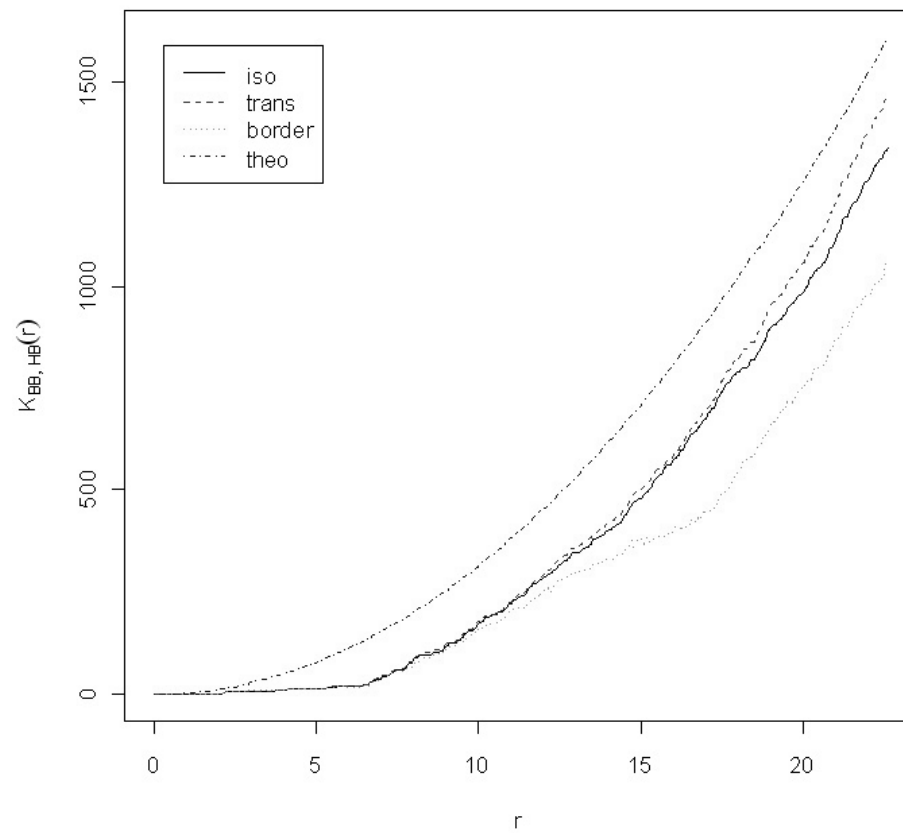
Porovnání lesních typu a morfologických prvků:



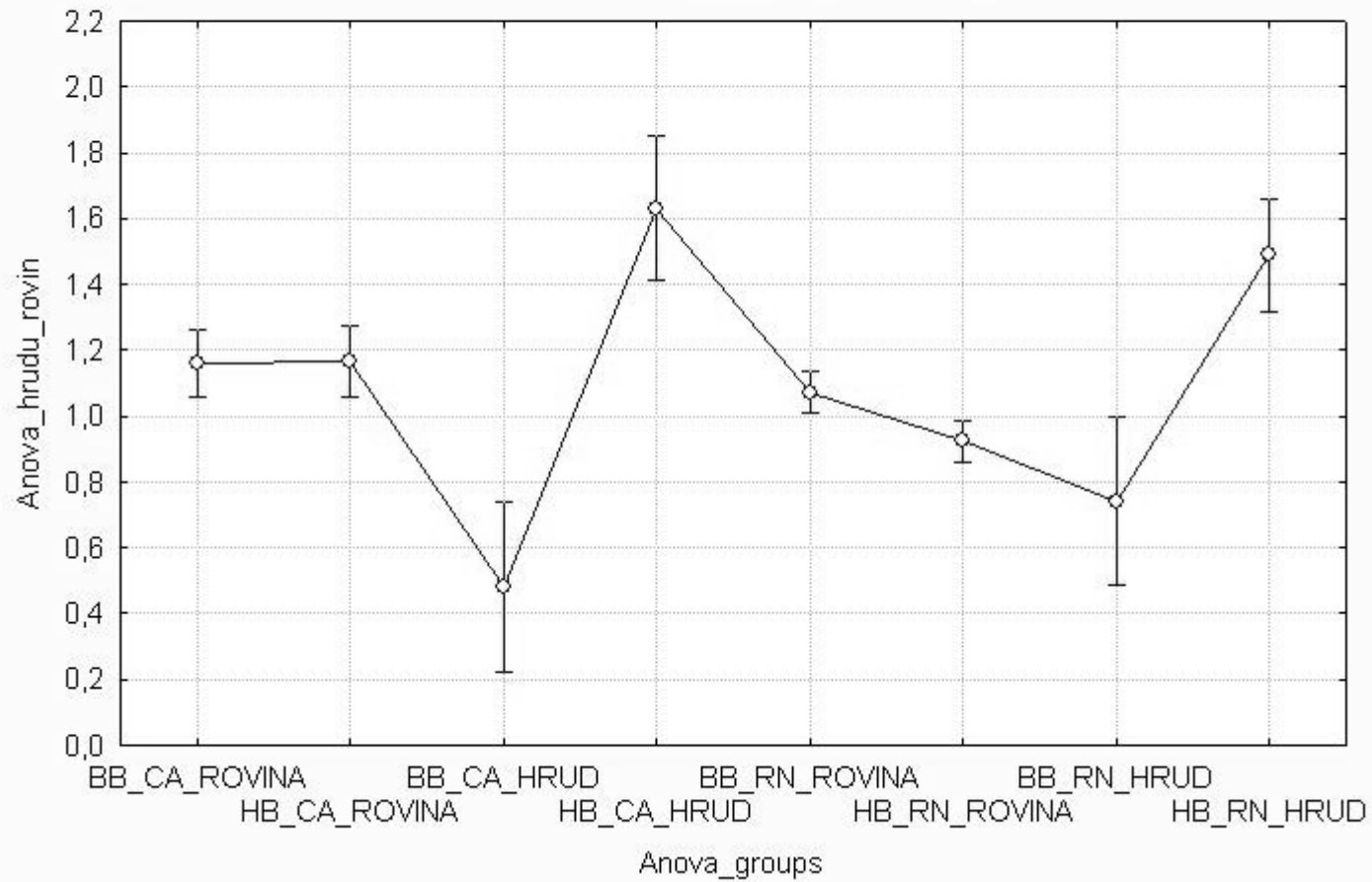
K(ij) funkce, BB-HB, Cahnov 2006 - rovina



K(ij) funkce, BB-HB, Cahnov 2006 - hrúd

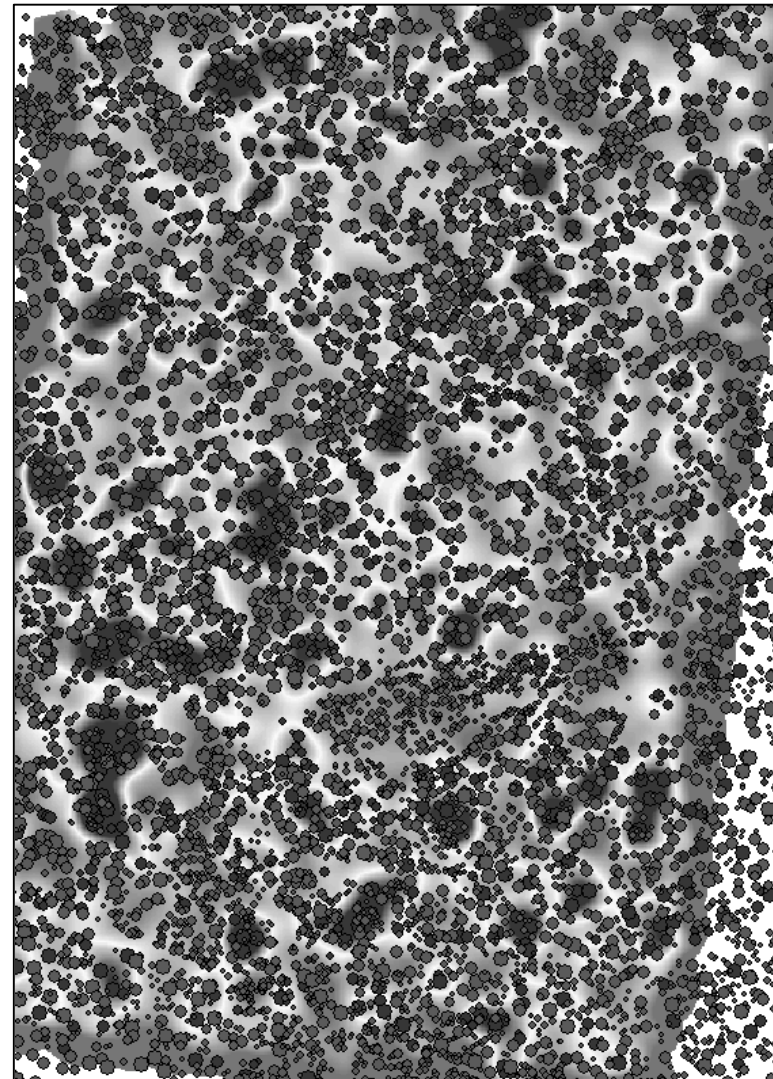
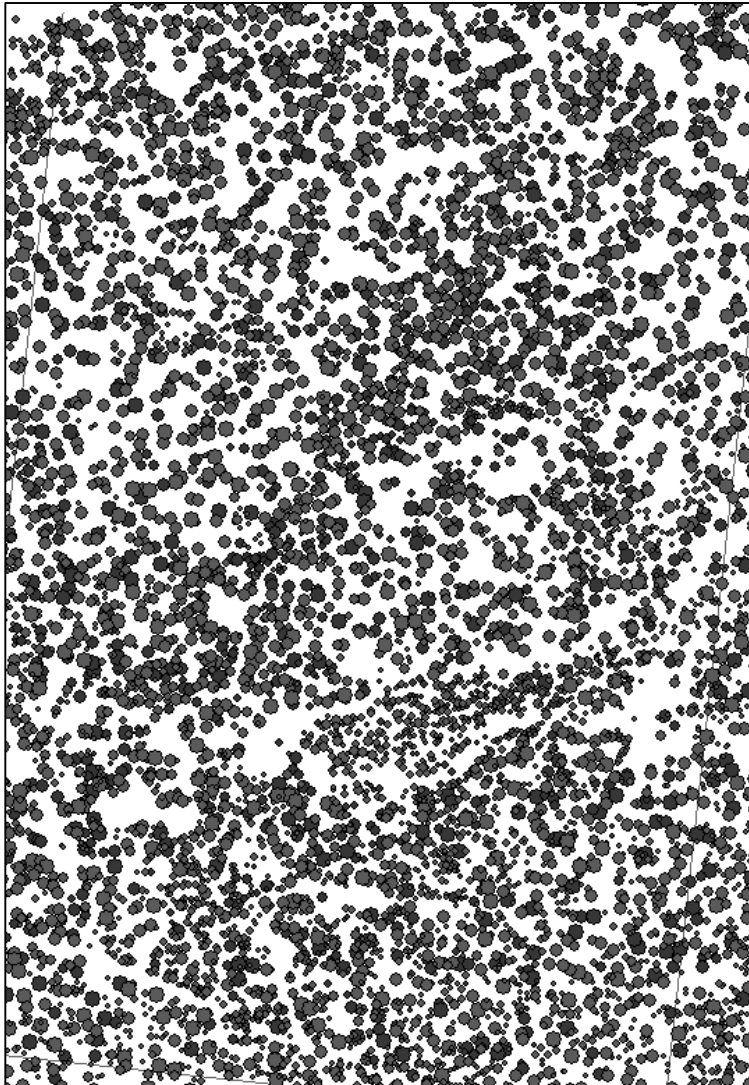


Jednofaktorová ANOVA, objemy kmenů BB, HB
Současný efekt: $F(7, 8521)=14,501$, $p=0,0000$
Vertikální sloupce označují 0,95 intervaly spolehlivosti



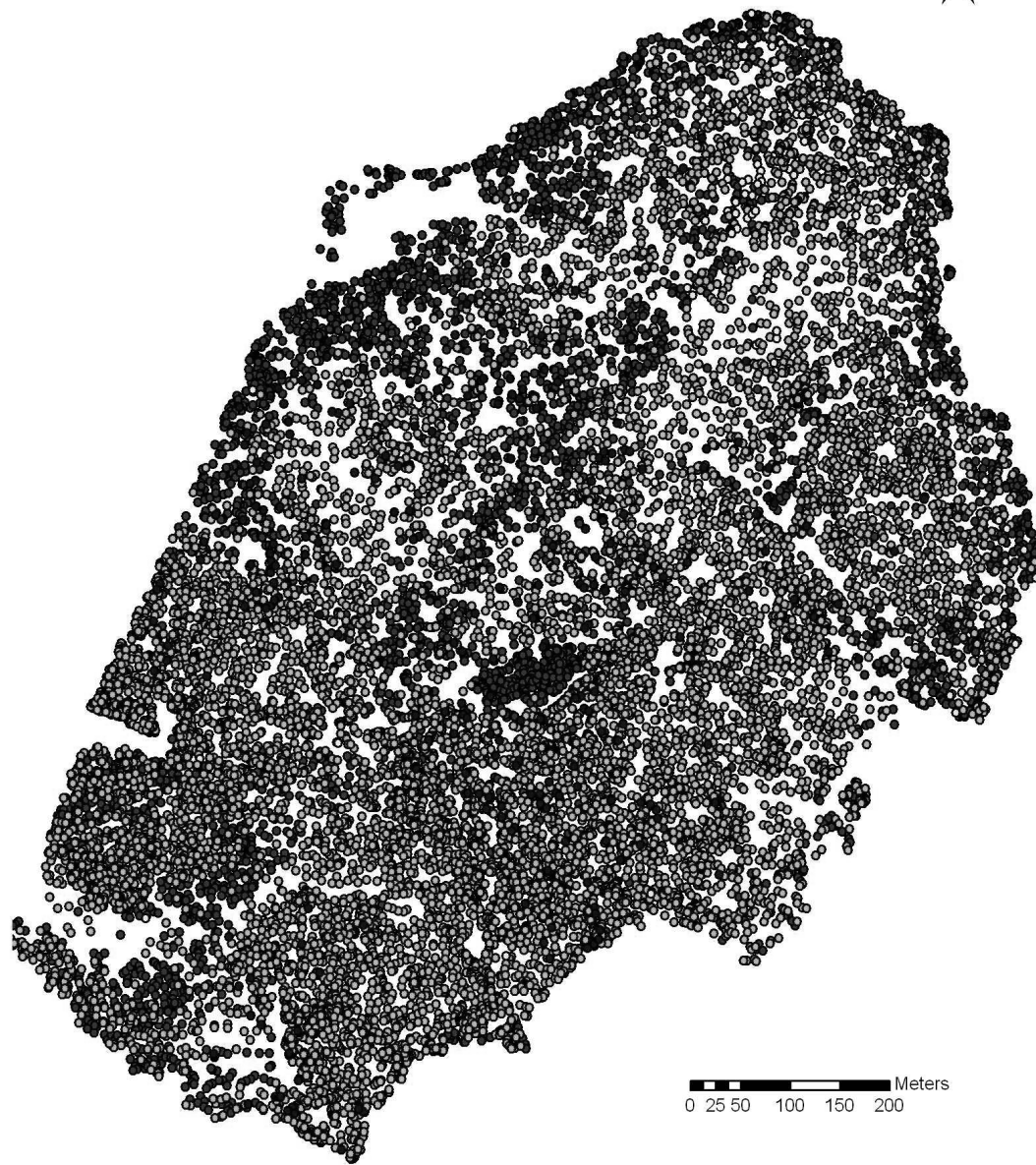
Interpolace ze stromových map

- Rozložení je natolik náhodné, že klasické interpolací metody nelze použít
=> Obrazové filtry – pohyblivé okno



Prípádová studie - NPR Žofínský prales

Stromová situace 97



0 25 50 100 150 200 Meters